

# AIR PILOTED VALVE ACTUATORS



| MINIMUM PRESSURE REQUIRED (psig)* |                 |                 |                 |                 |                |                |                 |                 |                 |                 |               |
|-----------------------------------|-----------------|-----------------|-----------------|-----------------|----------------|----------------|-----------------|-----------------|-----------------|-----------------|---------------|
| Clippard Valve                    | Pressure (psig) |                 |                 |                 |                | Clippard Valve | Pressure (psig) |                 |                 |                 |               |
|                                   | Pressure (psig) | Pressure (psig) | Pressure (psig) | Pressure (psig) | Vacuum (in Hg) |                | Pressure (psig) | Pressure (psig) | Pressure (psig) | Pressure (psig) | Vacuum (" Hg) |
|                                   | w/MPA3          | w/MPA-5         | w/MPA-7         | w/MPA-10        | w/MVA-10       |                | w/MPA3          | w/MPA-5         | w/MPA-7         | w/MPA-10        | w/MVA-10      |
| ES-1 Switch                       | 12              | 4               | 2               | *               | *              | FV-3           | 41              | 15              | 7.5             | 4.0             | 8.2           |
| MAV-2 Valve                       | 23              | 8               | 4               | 2.0             | 4.2            | FV-3P          | 41              | 15              | 7.5             | 4.0             | 8.2           |
| MAV-3 Valve                       | 23              | 8               | 4               | 2.0             | 4.2            | FV-4           | 41              | 15              | 7.5             | 4.0             | 8.2           |
| MAV-4 Valve                       | 36              | 11              | 5.5             | 3.5             | 7.2            | FV-4P          | 41              | 15              | 7.5             | 4.0             | 8.2           |
| MJV-4 Valve                       | 36              | 11              | 5.5             | 3.5             | 7.2            | FV-5           | 41              | 15              | 7.5             | 4.0             | 8.2           |
| MAV-4D Valve                      | 13              | 4               | 1.5             | 1.0             | 2.0            | FV-5P          | 41              | 15              | 7.5             | 4.0             | 8.2           |
| MJV-4D Valve                      | 13              | 4               | 1.5             | 1.0             | 2.0            | FV-3D          | 14              | 5               | 2.5             | 1.5             | 3.2           |
| MJV-2 Valve                       | 30              | 10              | 5               | 3.0             | 6.2            | FV-3DP         | 14              | 5               | 2.5             | 1.5             | 3.2           |
| MJV-3 Valve                       | 30              | 10              | 5               | 3.0             | 6.2            | FV-4D          | 14              | 5               | 2.5             | 1.5             | 3.2           |
| MAVO-2 Valve                      | 27              | 9               | 4.5             | 2.5             | 5.2            | FV-4DP         | 14              | 5               | 2.5             | 1.5             | 3.2           |
| MAVO-3 Valve                      | 27              | 9               | 4.5             | 2.5             | 5.2            | FV-5D          | 14              | 5               | 2.5             | 1.5             | 3.2           |
| MJVO-2 Valve                      | 30              | 10              | 5               | 3.0             | 6.2            | FV-5DP         | 14              | 5               | 2.5             | 1.5             | 3.2           |
| MJVO-3 Valve                      | 30              | 10              | 5               | 3.0             | 6.2            |                |                 |                 |                 |                 |               |

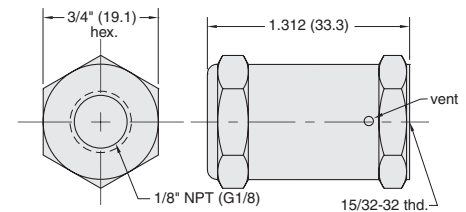
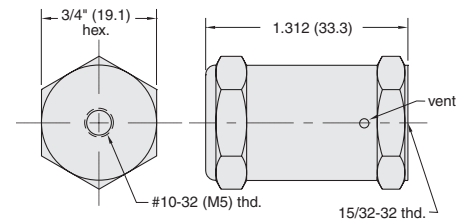
\*with 100 psig to valve inlet

## Single Acting Air Pilot Actuators

**Input Pressure:** 250 psig/17 bar max.

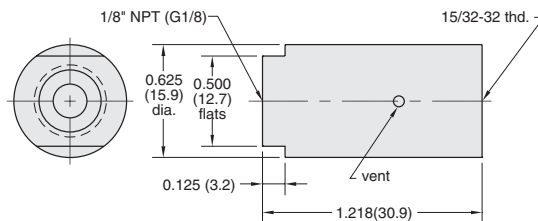
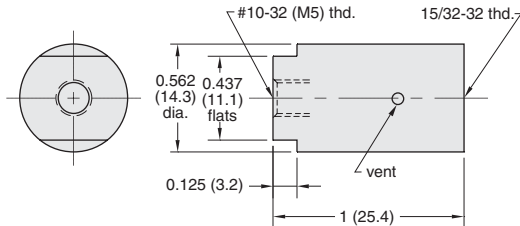
**Construction:** Body - brass; Springs - stainless steel; Seals - Buna N rubber; Piston - Delrin®

**Mounting:** #15/32-32 female thread to mount to Clippard miniature valves and components



**Bore Size:** 0.625 (15.9)

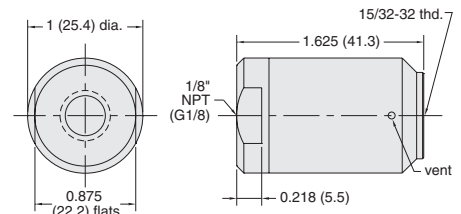
**Force Factor:** 0.3



**Bore Size:** 0.375 (9.5)

**Force Factor:** 0.1

| Part No.        | Description                                     |
|-----------------|---|
| <u>MPA-3</u>    | Single Acting, Spring Return Actuator, #10-32   |
| <u>MPA-3-M5</u> | Single Acting, Spring Return Actuator, M5       |
| <u>MPA-3P</u>   | Single Acting, Spring Return Actuator, 1/8" NPT |
| <u>MPA-3-MG</u> | Single Acting, Spring Return Actuator, G1/8     |



**Bore Size:** 0.825" (21.0) dia.

**Force Factor:** 0.6

| Part No.        | Description                                     |
|-----------------|---|
| <u>MPA-7</u>    | Single Acting, Spring Return Actuator, 1/8" NPT |
| <u>MPA-7-MG</u> | Single Acting, Spring Return Actuator, G1/8     |